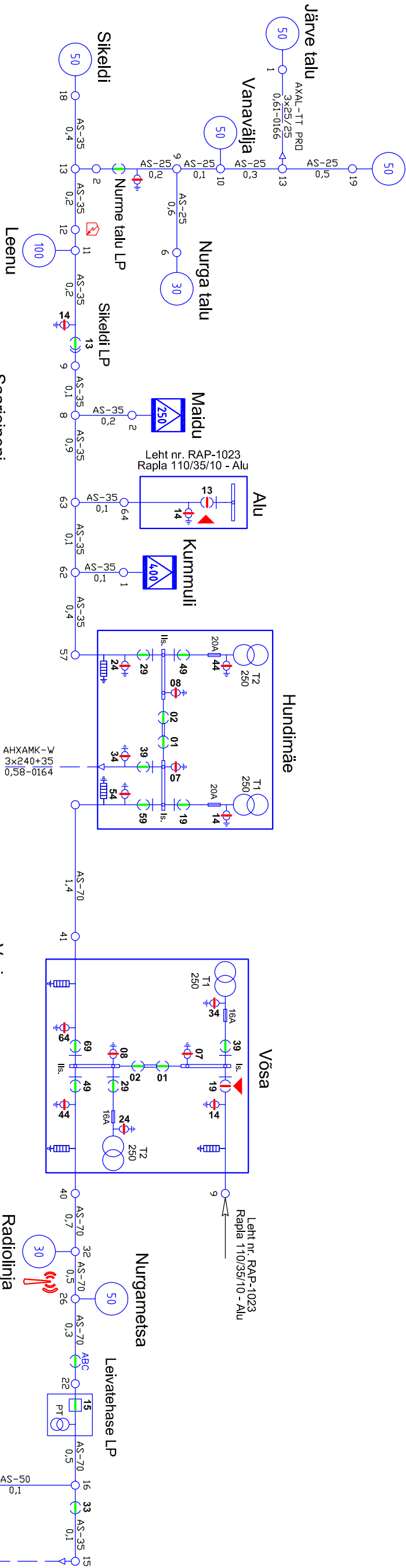
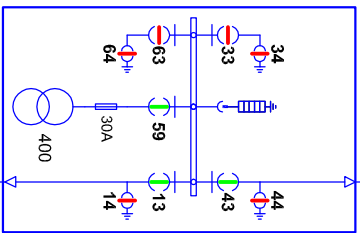


Nurme talu



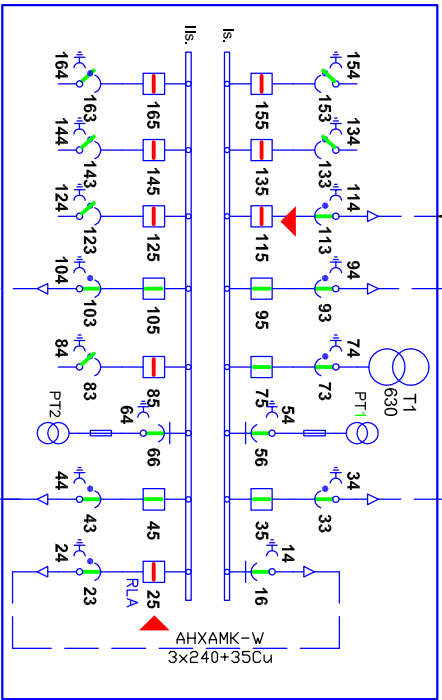
AAB-10
3x70
0,33-0162

Autobaasi

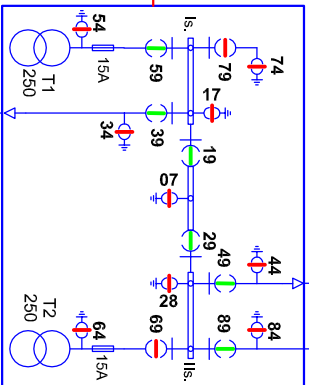


AHXAMK-W
3x120+35
0,35-0263
Leht nr. RAP-1022
Rapla 110/35/10 - Alevi

Raplasuve



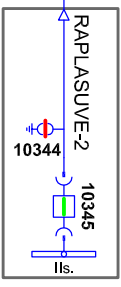
RAPLA 110/35/10 kV
RAPLASUVE-1
10315
10314



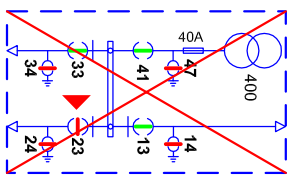
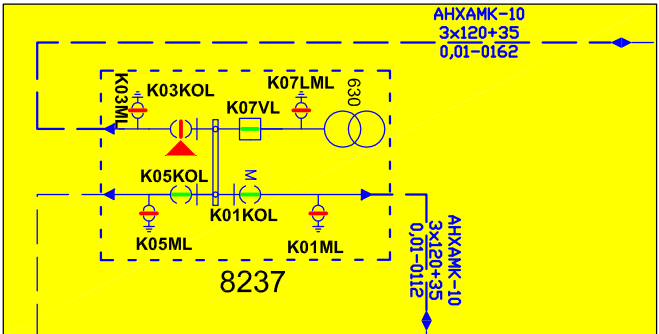
Vigori

AHXAMK-W
3x300+70
3,50-0383

RAPLA 110/35/10 kV



AHXAMK-W
3x120+35
0,07-0385



Adminhoone

Leht nr. RAP-1030
Rapla 110/35/10 - Linna

Projekt		Tallinn	
Kooli tn 8 kinnistu peakatsme suurendamine, võrgu ümberehitus kliendi soovil. Rapla linn. Rapla vald.		Elektrilevi OÜ	
Joonis		Joonise nr	
LEONHARD WEISS		TP0535, LP4478-2	
ENERGY AS		Mõõtkava	
E-post energy@leonhard-weiss.com		Staadium	
Telefon +372 715 4100		Tööprojekt	
Registrikood 10665798		Keel	
		EST	
		Lehti	
		1	
		Lehti	
		3	
Aj 8237 10kV ühendusskeem.			